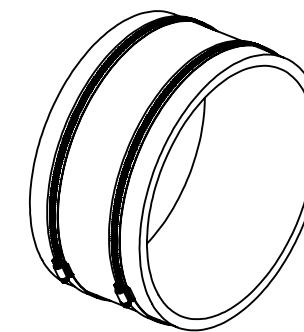
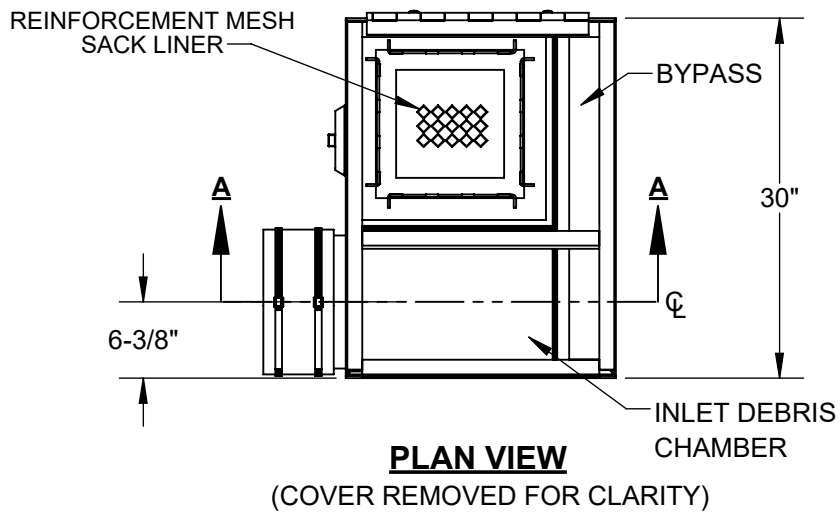
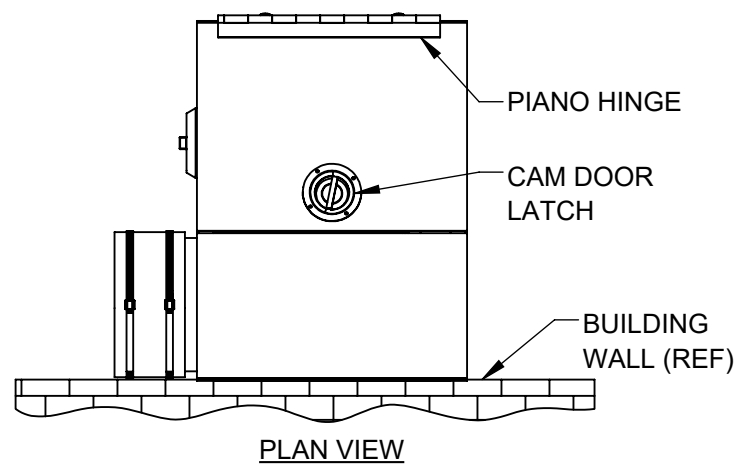
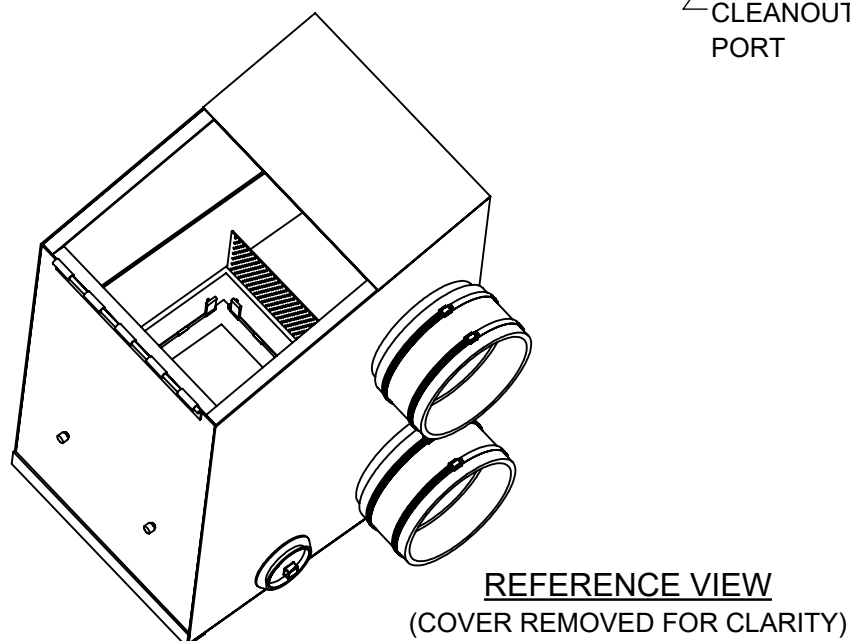
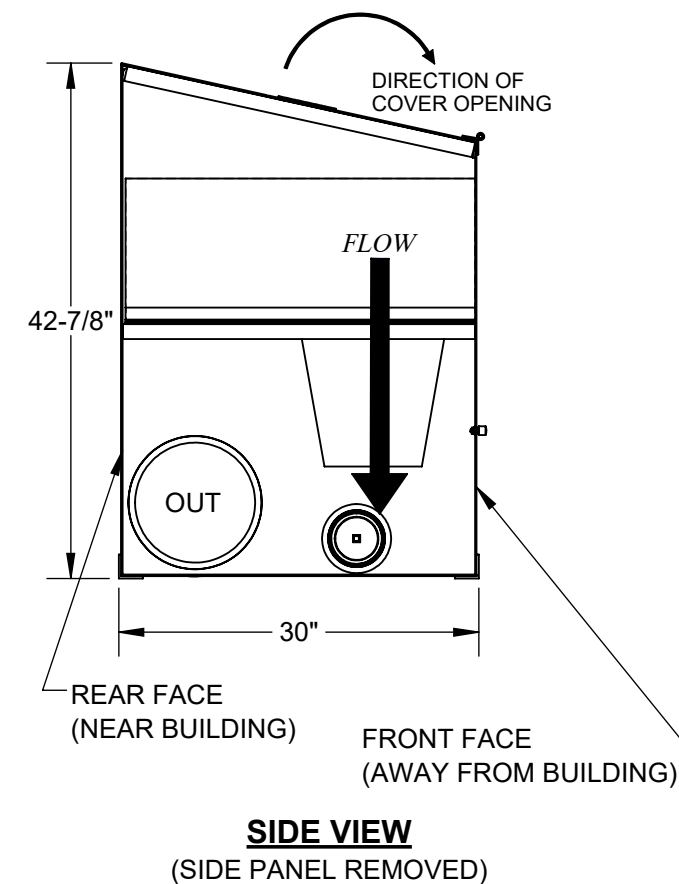
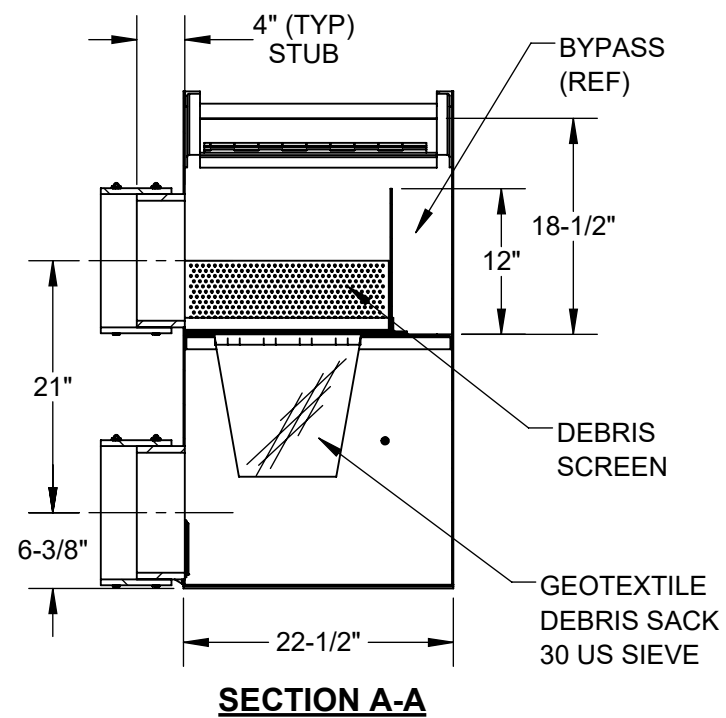
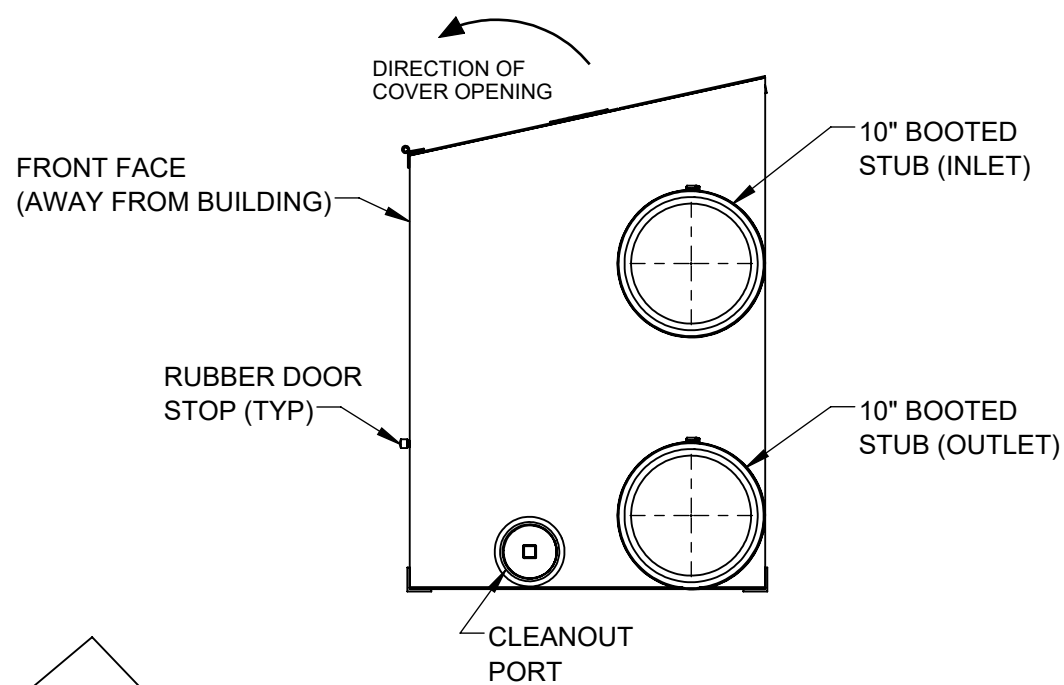


NOTES:

1. WEIGHT (APPROX.):
 - A) EMPTY W/STORMSACK: 200-LB MAX
 - B) FULL OF WATER: 2500-LB MAX
2. MATERIAL:
 - A) FILTER HOUSING AND COVER: ALUMINIUM, 5000 SERIES
 - B) INLET/OUTLET STUBS: THICK WALL ALUMINUM ALLOY
 - C) SUPPORT HARDWARE: CRES 300 SERIES OR EQUAL
3. PERFORMANCE CHARACTERISTICS (TYP):
 - A) DEBRIS CAPACITY: .74 CU-FT
 - B) FILTERED FLOW RATE: 1000 GPM (2.2 CFS)
 - C) BYPASS FLOW RATE: 800 GPM (1.8 CFS)
4. TYPICAL INSTALLATION: CUT DOWNSPOUT PIPE AND CONNECT THE 10" INLET AND OUTLET PIPES AS REQUIRED TO REDIRECT RAIN FLOW THROUGH THE FILTER BOX. RUBBER CONNECTION BOOTS ARE PROVIDED.
5. GEOTEXTILE STORMSACK IS REMOVABLE FOR EASY CLEANING.
6. ALL TANK DIMENSIONS ARE REFERENCE.



UNLESS OTHERWISE SPECIFIED
TWO RUBBER CONNECTION BOOTS
ARE PROVIDED FOR 10" PIPE HOOKUP



<p>PROPRIETARY AND CONFIDENTIAL THIS DOCUMENT IS THE PROPERTY OF FABCO INDUSTRIES AND IS CONVEYED WITH THE EXPRESS CONDITION THAT IT AND THE INFORMATION CONTAINED IN IT ARE NOT TO BE USED, DISCLOSED, OR REPRODUCED IN WHOLE OR IN PART, FOR ANY PURPOSE WITHOUT THE EXPRESS WRITTEN CONSENT OF FABCO INDUSTRIES; AND THAT NO RIGHT IS GRANTED TO DISCLOSE OR SO USE ANY INFORMATION CONTAINED IN SAID DOCUMENT.</p>		<p>UNLESS OTHERWISE SPECIFIED REMOVE ALL BURRS BREAK SHARP EDGES .002 - .020 FILLETS .020 MAX DIMENSIONS ARE IN INCHES AND INCLUDE CHEMICALLY APPLIED OR PLATED FINISHES</p>		<p>TOLERANCES: DEC .00 ± .01 DEC .000 ± .005 FRACT ± 1/16 ANGLE ± 2°</p>		<p>APPROVAL DATE DWN M.S. 10/10/2017 CHKR ENGR J.P. 10/10/2017 UPD</p>		<p>fabco industries inc</p> <p>TITLE: DOWNSPOUT 12" SACK ALUMINUM</p>	
		<p>PROJECT: _____ MATERIAL: _____</p>		<p>FABCO INDUSTRIES, INC. 24 CENTRAL DRIVE FARMINGDALE, NY 11735 WWW.FABCO-INDUSTRIES.COM</p>		<p>SIZE DWG. NO. REV B 10080-10-000 A</p>			
<p>SCALE: NONE</p>						<p>SHEET 1 OF 1</p>			