

# CB Survey Guide – What to look for?



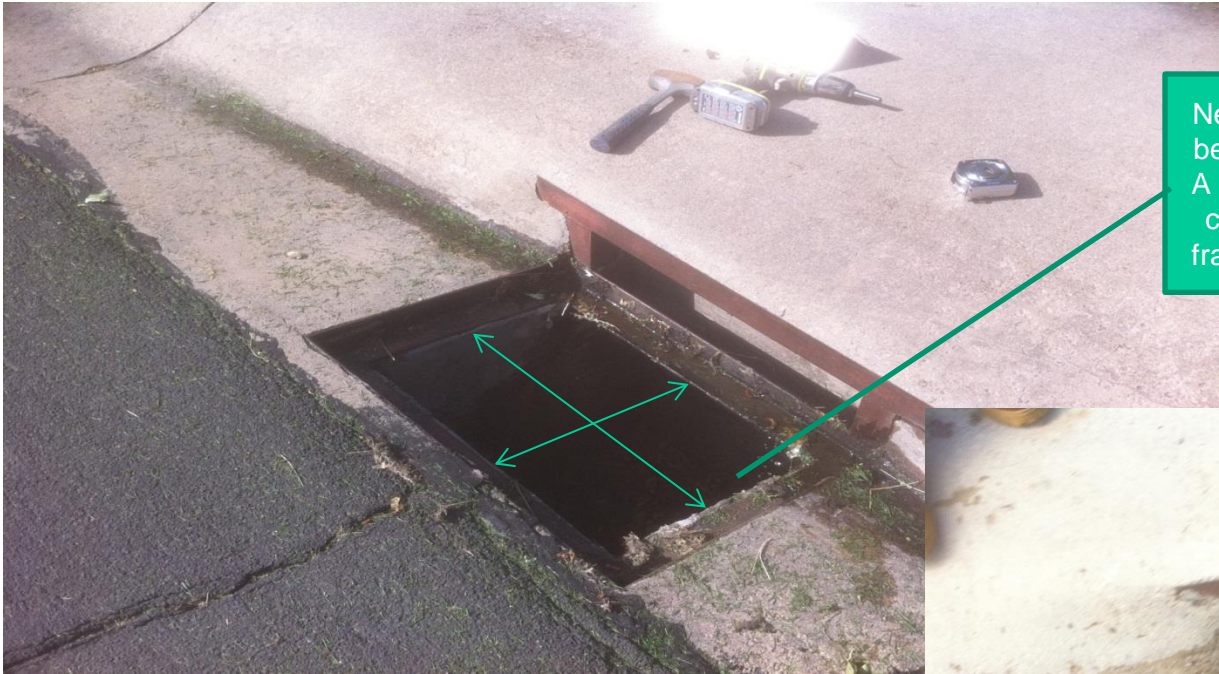
Concrete obstruction will need to be removed to allow FABCO flange system to fit



Brick obstructions will impede FABCO products, needs to be removed to maintain clear opening dimension 6-8 inches (150 to 250 mm) below ledge

Need to measure clear opening between the frame ledges (Dim A and B on Survey Worksheet)

# CB Survey Guide – What to look for?



Need to measure clear opening between the frame ledges (Dim A and B on Survey Worksheet), check for obstruction beneath frame that restrict clear opening





# CB Survey Guide – What to look for?



Need to keep clear opening between inside frame A and B throughout the structure so StormBasin will install.

4" Drop flange now fits with wall chiseled slightly to maintain inside frame clearance (Dim A and B)



# CB Survey Guide – Perfect Conditions



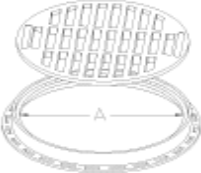
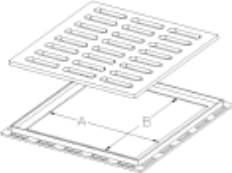
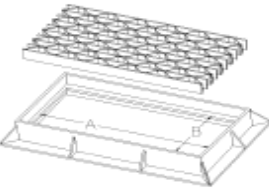
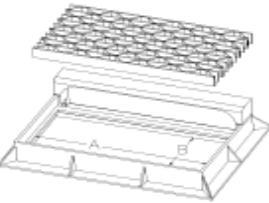
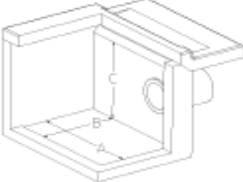
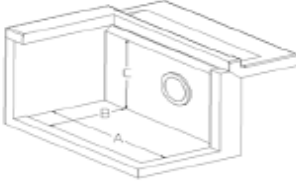
Measure clear opening between the frame ledges (Dim A and B on Survey Worksheet)

Easily installed StormSack with no obstructions in the clear space

*Treating Water Closer to the Source*



Notes: (1) Use one page per catch basin. (2) Record measurements to within 1/8". (3) Measure catch basin depth from bottom of grate.

Flat Grate Clear Space		Square Grate Clear Space		Flat Grate Clear Space		Combination Grate Clear Space		Open-Curb Vault (Single)		Open-Curb Vault (Double)	
											
A (Dia)	in	<input type="checkbox"/> Steel <input type="checkbox"/> Cast Iron		<input type="checkbox"/> Steel <input type="checkbox"/> Cast Iron		<input type="checkbox"/> Steel <input type="checkbox"/> Cast Iron		Type:		Type:	
		A	in	A	in	A	in	A	in	A	in
Depth	In	B	in	B	in	B	in	B	in	B	in
		Depth	in	Depth	in	Depth	in	C	in	C	in
Catch Basin ID # (Mark matching ID# on CB)		Clean-Out Req'd (Y/N)		<u>Contractor Information</u>				<i>(For Manufacturer's Use Only)</i>			
		Repair Req'd (Y/N)		Company:		Telephone:		Item	Suggested P/N	Flange Set	Quantity
<u>Catch Basin Location</u>				<u>Notes / Obstruction Details</u>				1			
								2			
								3			
								4			
								5			
Street Name:				<i>Special Instructions:</i>							
Town/City:											
Nearest Cross-Street:											
Surveyed By:		Date:									