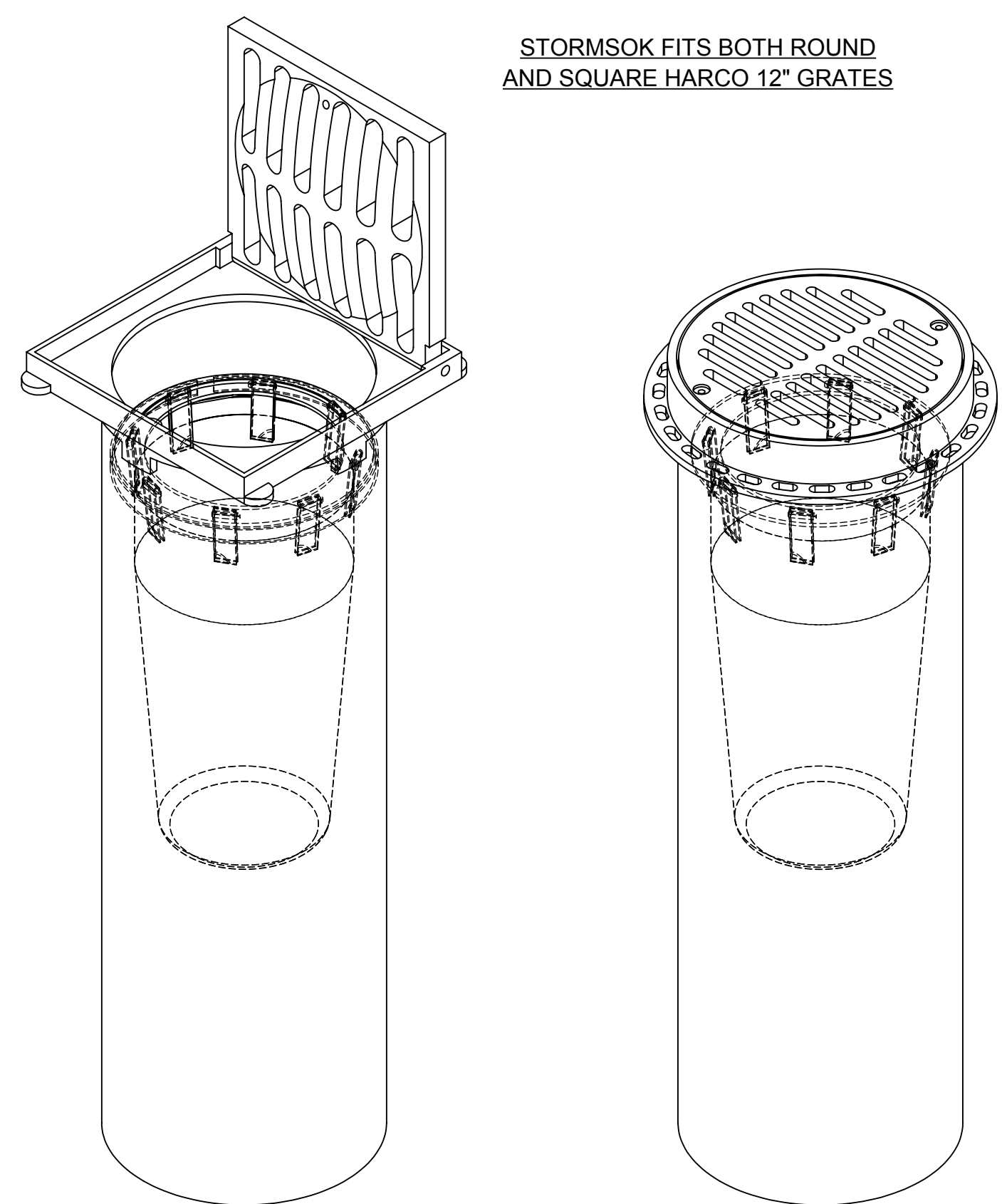


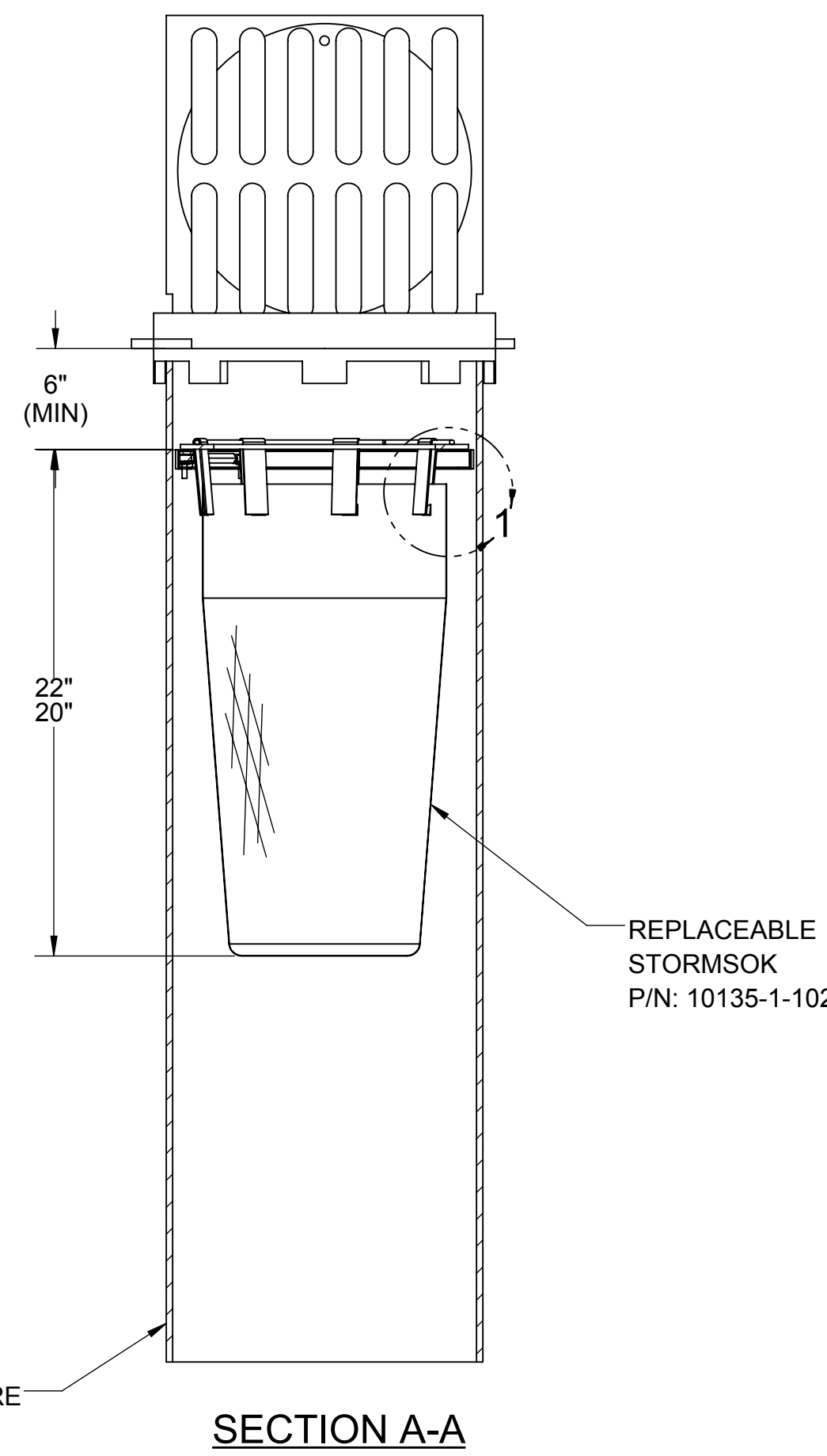
GENERAL INSTALLATION:
 ADJUST THE TURNBUCKLE DOWN TO GIVE THE SMALLEST RING DIAMETER AND LOCATE THE EXPANSION RING INTO THE HARCO STRUCTURE MINIMUM OF 6-IN DOWN FROM THE TOP OPENING AS SHOWN. BEGIN OPENING THE TURNBUCKLE UNTIL THE EXPANSION RING IS SELF SUPPORTING, THEN VERIFY THE RING IS LEVEL AND PLUMB TO THE HARCO STRUCTURE. USING A CALIBRATED TORQUE WRENCH, CONTINUE TO OPEN THE TURNBUCKLE TO 10 FT-LB TORQUE. DO NOT OVER TIGHTEN. INSTALL THE STORMSACK ASSEMBLY DIRECTLY ON THE SUPPORT RING.

NOTES FOR 10135-1-500 STORMSOK ASSEMBLY AND 10101-1-000 EXPANSION RING:

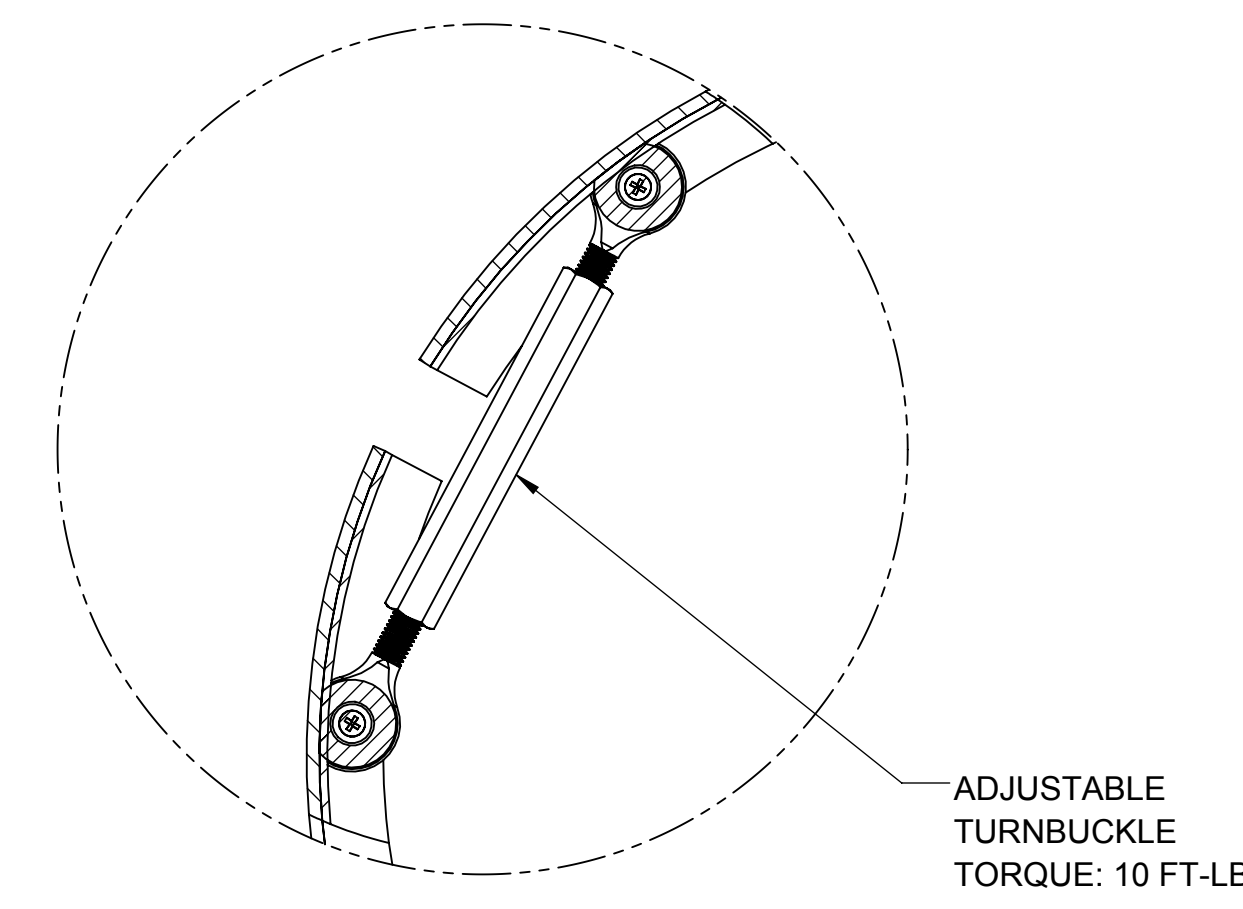
1. WEIGHT (EMPTY): 12 LB MAX
2. MATERIAL:
 - A) SUPPORT FLANGE: ALUMINUM ALLOY PLATE, 5000 SERIES
 - B) STORMSOK: WOVEN POLYPROPYLENE GEOTEXTILE
 - C) APPARENT OPENING SIZE (AOS): 20 US SIEVE (840 MICRONS)
 - D) EXPANSION RING: ALUMINUM ALLOY CHANNEL, 6000 SERIES
 - E) HARDWARE: STAINLESS STEEL
3. PERFORMANCE CHARACTERISTICS (TYP):
 - A) DEBRIS CAPACITY: 0.66 CU-FT
 - B) FILTERED FLOW RATE: 763 GPM (1.7 CFS)
 - C) BYPASS FLOW RATE: 530 GPM (1.2 CFS)
4. DESIGNED TO FIT HARCO 12" ROUND AND SQUARE CASTINGS
5. RECOMMENDED MINIMUM VAULT DEPTH: 2-IN BELOW STORMSOK
6. USE WITH FABCO REPLACEABLE STORMSOK, P/N: 10135-1-102
7. SHORT (12" LONG) STORMSOK IS AVAILABLE ON REQUEST
8. REPLACEABLE OIL BOOM IS AVAILABLE ON REQUEST



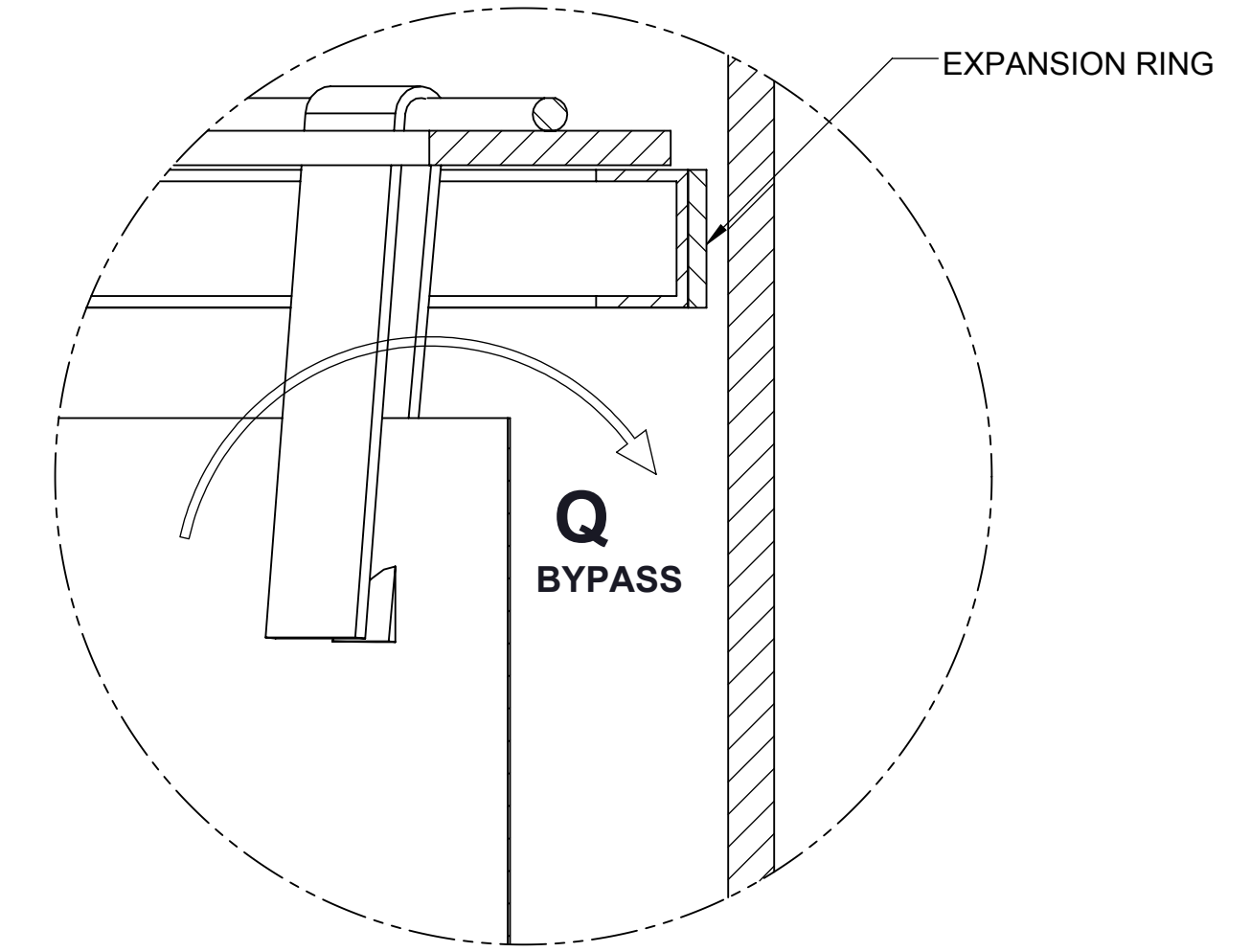
REFERENCE VIEW



SECTION A-A



CUTAWAY DETAIL



DETAIL 1

PROPRIETARY AND CONFIDENTIAL
 THIS DOCUMENT IS THE PROPERTY OF FABCO INDUSTRIES AND IS CONVEYED WITH THE EXPRESS CONDITION THAT IT AND THE INFORMATION CONTAINED IN IT ARE NOT TO BE USED, DISCLOSED, OR REPRODUCED IN WHOLE OR IN PART, FOR ANY PURPOSE WITHOUT THE EXPRESS WRITTEN CONSENT OF FABCO INDUSTRIES; AND THAT NO RIGHT IS GRANTED TO DISCLOSE OR SO USE ANY INFORMATION CONTAINED IN SAID DOCUMENT.

PROJECT	SEE NOTES
MATERIAL	SEE NOTES
MODEL LINK	10135-1-000

APPROVAL	DATE
DWN MS	1/14/15
CHKR JP	1/14/15
ENGR ARVD	

TITLE: STORMSOK AND EXPANSION RING FOR HARCO 12" ROUND/SQUARE STORM DRAIN	
SIZE: D	DWG. NO.: 10135-1-000
SCALE: NONE	REV: J
SHEET 1 OF 1	